



1 **Building a Community of Math Learners**

Aly Martinez
Instructional Coordinator,
TK-12 Mathematics

Mimi Luong
Data & Assessment
Resource Teacher

bit.ly/sdusdmathcommunity

2 **Welcome!**

Welcome your students with a quick check-in!

- Open your "classroom" early
- Welcome and Affirm
- "Thank you for inviting me into your home"

3 **Building a Community of Math Learners**

These turn your sound and video ON/OFF!

Click MORE to access the Chat!

4 **Zoom Norms**

Mute your sound when not speaking. Use the chat box to ask questions. Ask for support in the Breakout Rooms. Actively Participate. Have fun!

5 **A Community = Mathematically Powerful Classrooms**

Communities are the foundation for our learning and the vehicle by which we make connections to others and our world.

6 **Which One Doesn't Belong?**

7 **Community Agreements**

With a common goal of creating an open and a respectful space, today's session we aim to establish a setting where every individual can benefit and flourish.

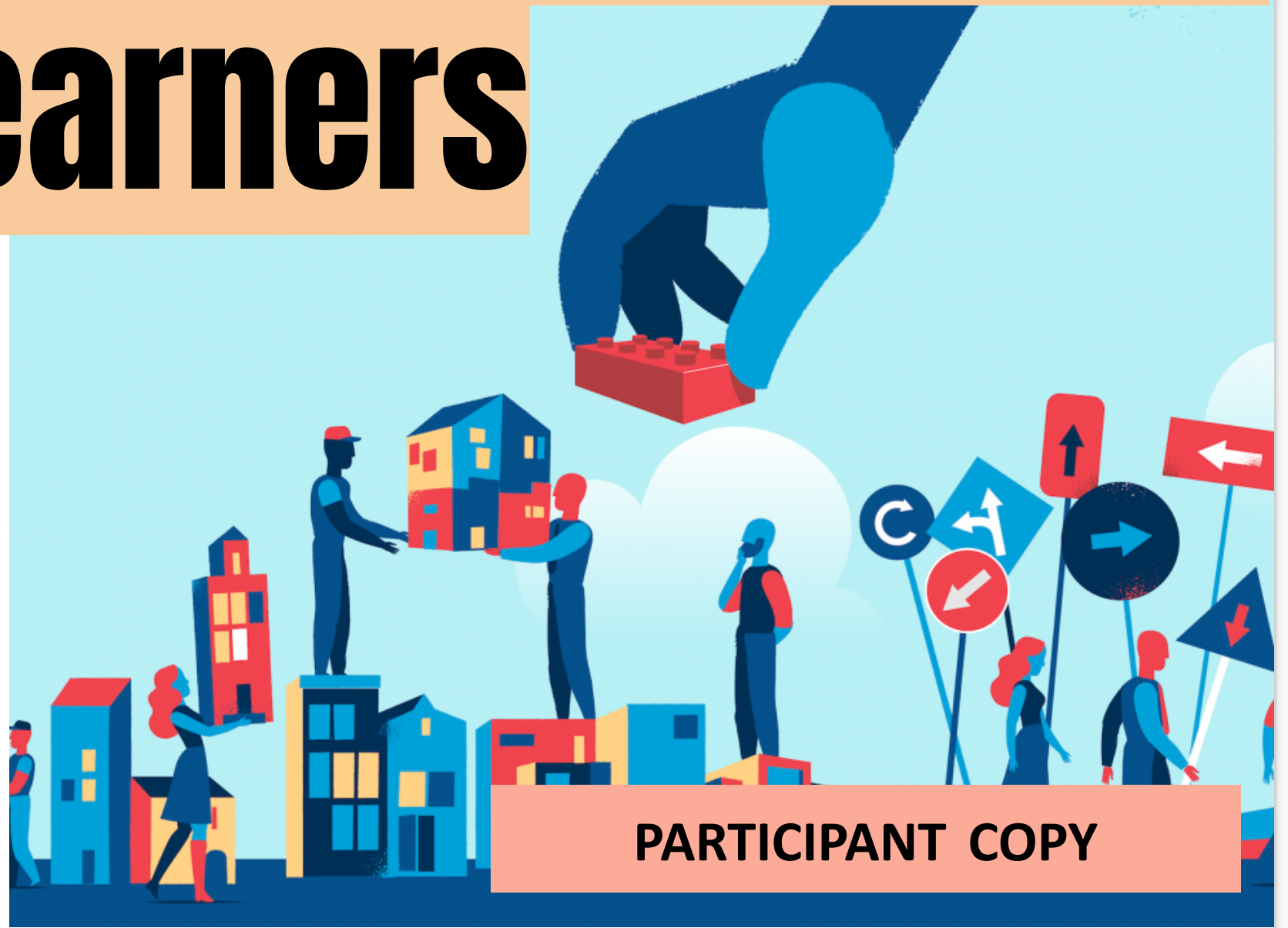
Don't close yourself up.

Building a Community of Math Learners

Aly Martinez
*Instructional Coordinator,
TK-12 Mathematics*

Mimi Luong
*Data & Assessment
Resource Teacher*

bit.ly/sdusdmathcommunity



PARTICIPANT COPY

Welcome to Building a Community of Math Learners! Before we start our learning today, check out this welcoming activity! <https://student.desmos.com/join/gyqhxt> You can sign in with your sandi.net account OR just log in as a guest!

CHAT DROP: All of our important materials are in the speaker notes of our powerpoints! Click here to get those slides: bit.ly/sdusdmathcommunity